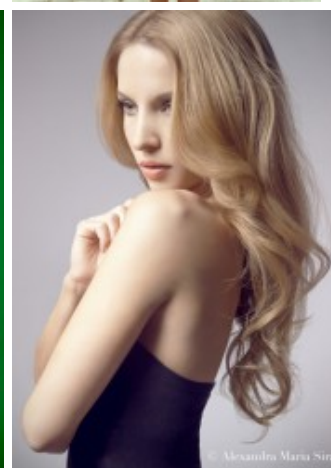
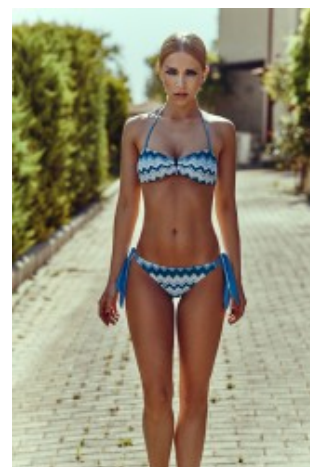
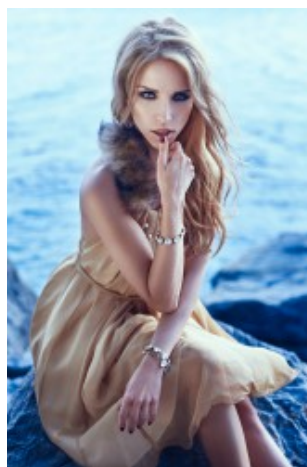


Ellen E.



groesse	173
masse	88-61-92
schuhe	39
haare	hellbraun
augen	blau-grün

Referenzen:

- diverse Testshootings
- VIWO Design (Catwalk)
- Aids Gala Nanna Kuckuck
- Jimmyshop
- Mimi Berlin
- ""Freundin""
- Musikvideo ""Prinz Pi"" Wella
- Sebastian Professional
- Fashionweek