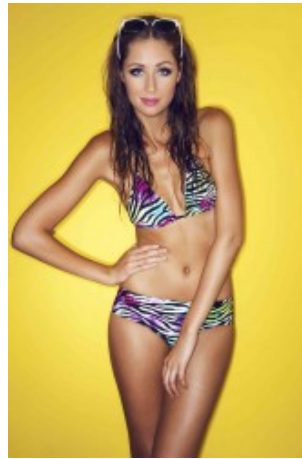


# Janine G.



groesse	177
masse	83-64-93
schuhe	40
haare	hellbraun
augen	blaugrau

## Referenzen:

Hugo Boss  
Iris von Arnim  
Windosr  
Loreal  
Kerastase  
Redken  
Schwarzkopf  
Mercedes Benz Fashion Week Berlin  
Breuninger  
Galeria Kaufhof  
Mc Fit  
HSE24 (Commercial)  
Netto (Commercial)  
Gerry Weber  
Marc Cain  
uvm.