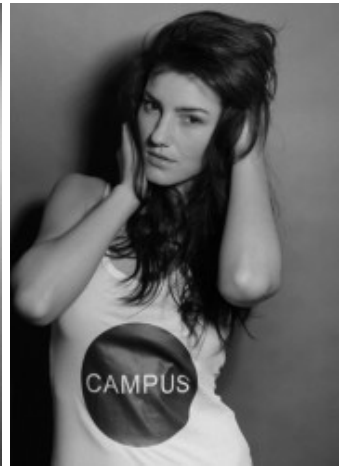
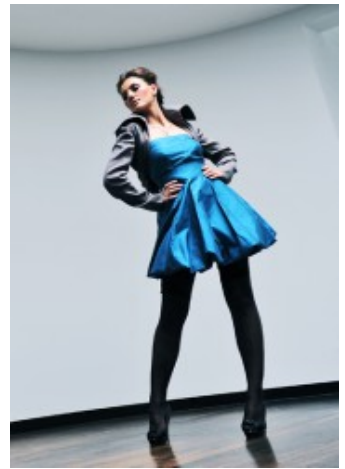


Johanna W.



groesse	175
masse	86-64-92
schuhe	39/40
haare	braun
augen	braun

Referenzen:

diverse Fashionshows
Modelhostess auf diversen Messen
Miss Germany Wahl
Porsche Sports Cup
Harley Day (für Ed Hardy)
Goldwell
Wella
Sebastian Professional
diverse Fotoshootings