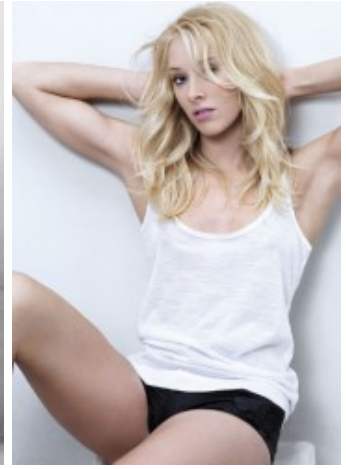
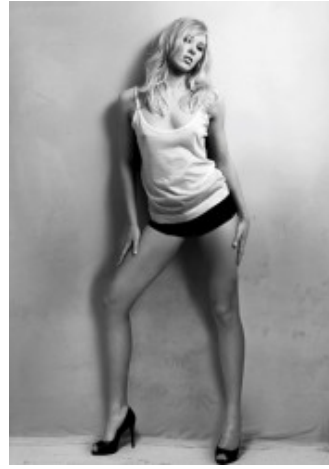


Katharina W.



groesse	180
masse	86-62-92
schuhe	41
haare	blond
augen	blau

Referenzen:

Mercedes Benz Fashionweek (Catwalk)
Fred Mello Premium
Four Flavor (Fashionshooting)
Bridge of Fashion (Catwalk)
Fashion Festival Dunkelziffer (Catwalk)
Aidsgala Berlin
L'OREAL (Laufsteg/Haarmodel)
Goldwell (Laufsteg/Haarmodel)
Wella (Laufsteg/Haarmodel)
Sebastian Professional