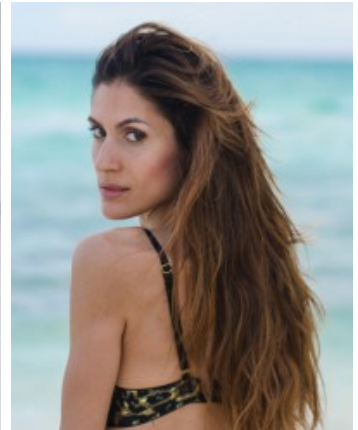
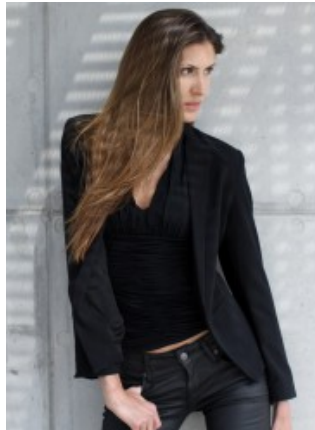
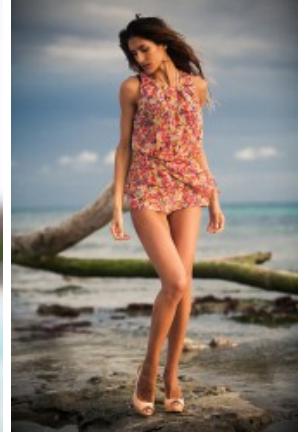


Natalia L.



groesse	177
masse	83-62-91
schuhe	40
haare	hellbraun
augen	braun

Referenzen:

Wella
Goldwell
Loreal
G-Star
Gieseke Cosmetics
D&G
Dolce & Gabbana
Escada
Teen Vogue
Kilian Kerner
Bread & Butter
Fashionweek Berlin