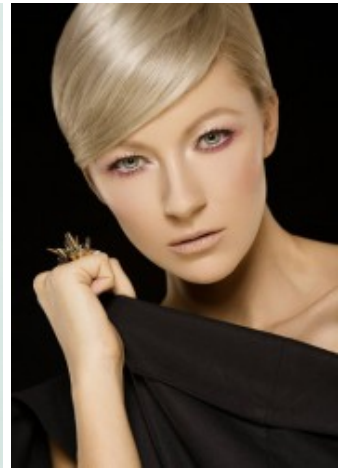
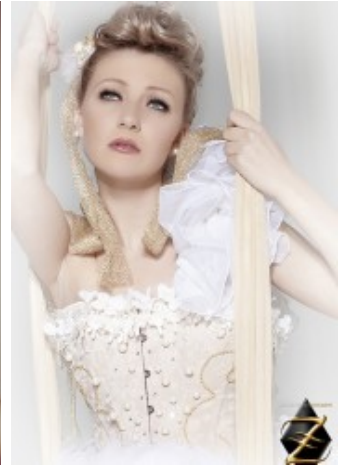
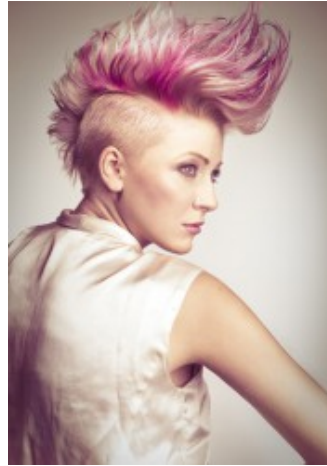


Rymma S.



groesse	174
masse	86-64-86
schuhe	38
haare	blond
augen	blau

Referenzen:

Wella
Pivot Point
Paul Mitchell
Clynol
Klier
Hair@Work, Mannheim
Hair and Beauty, Frankfurt
Tophair, Düsseldorf
Zeitschrift Eurotuner